

# Painted Meadow

Can you imagine a meadow with hearty, deeply colorful blooms like the red and pink sunset colors across the sky? This is what I thought of while I visited my mother last summer and we walked through the gardens. The coneflowers were in full bloom in the warm sun, their plump centers drawing in the bees and butterflies.

The beautiful shape of the coneflower inspired this collection and I couldn't resist adding in those bumblebees- so plump and fuzzy, just like the flower centers! The fabric group also includes little drawings that show the coneflowers and bees in sweet illustrations or dancing within paisley shapes. Watercolor textures, sprigs of plants and sketchy oval dots compliment the lively group.

CONEFLOWERS IN SUNSET COLORS

ROBIN  PICKENS

RPQP P124 / RPQP P124G  
**PICKET SPRAY - 72" x 72" - LC Friendly**  
Additional size and color options available



RPQP KS123 / RPQP KS123G  
**KYOTO STEPS LAP - 58" x 67"**  
Additional size and color options available





Coneflower - 48660 11



Little Sprigs - 48663 11



print reference only

Thatched - 48626 36



Simple Drawings - 48662 11



Coneflower Paisley - 48661 11

CREAM



Coneflower - 48660 16



Little Sprigs - 48663 16



Thatched - 48626 56

PETAL

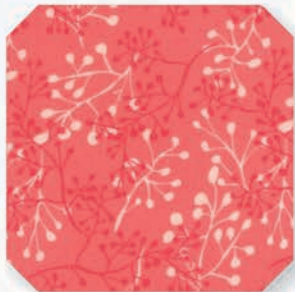


Simple Drawings - 48662 15

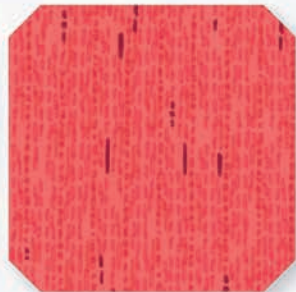


Coneflower Paisley - 48661 15

BURGUNDY



Little Sprigs - 48663 17

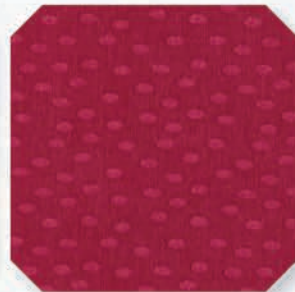


Watercolor Stripe - 48664 17

CORAL



Watercolor Stripe - 48664 19



Dots - 48665 19



# DESIGNER TRIVIA



## ROBIN PICKENS

**First collection** – Poppy Mae in 2016

**First time you saw your name on the selvage** – It was when my first box of sample fabric for Poppy Mae arrived. It was quite a magical feeling, one that I still get every time a new collection arrives.

**Favorite pre-cut** – I love Layer Cakes because of their versatility. I can cut them up in many different ways, and they're the easiest for me to design quilts with.

**Years sewing and quilting** – I learned to sew when I was in grade school, even taking sewing lessons then. I also took sewing class in Junior High School, but I didn't make my first quilt until after I was married.

**Who taught you to sew** – Mostly my Mom. She was - and still is - an accomplished seamstress, and she made a lot of our clothes when I was young. She was also a quilter so my sister and I both learned the difference between a log cabin block and a Drunkard's Path block from her. They're both great sounding-boards when I have ideas that I want opinions for.

First Fabric Collection  
**POPPY MAE**

robinpickens.com



PASSION



Coneflower - 48660 18



Coneflower Paisley - 48661 18



Thatched - 48626 58



RPQP B125 / RPQP B125G  
**BEANSTALK TWIN - 79" x 90" - FQ Friendly**  
Additional size and color options available



moda  
FABRICS + SUPPLIES

DELIVERY  
OCTOBER



Coneflower - 48660 12



Little Sprigs - 48663 12



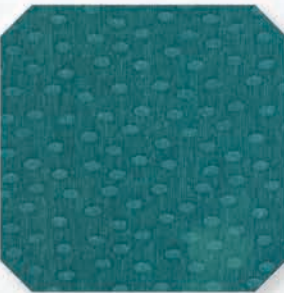
Watercolor Stripe - 48664 12



Simple Drawings - 48662 12



Thatched - 48626 52



Dots - 48665 12



Coneflower Paisley - 48661 12

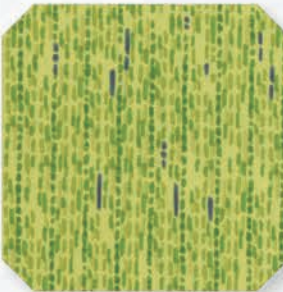
TEAL



Coneflower - 48660 13



Little Sprigs - 48663 13



Watercolor Stripe - 48664 13



Coneflower Paisley - 48661 13



Simple Drawings - 48662 13



Dots - 48665 13



Thatched - 48626 54

SPRIG

48660

Asst. 15

Asst. 8

AB

JR

LC

MC

PP

OCTOBER DELIVERY

•31 Prints •100% Premium Cotton  
JR's, LC's & PP's include two each of 48662 and 48663.